



02 PALACE REHABILITATION

THE RESIDENTIAL PALACE

The Residential Palace built in the 19th century is projected following the classical canons, located in the center of the garden, on the axis of the main façade.

A symmetrical building with a wide central staircase that generates an annular circulation around it that serves the main spaces.

All these typological and structural elements have been maintained since their origin, except for the compartmentalization of the exterior spaces that were adapted to their new uses. This is where the rehabilitation works have acted with

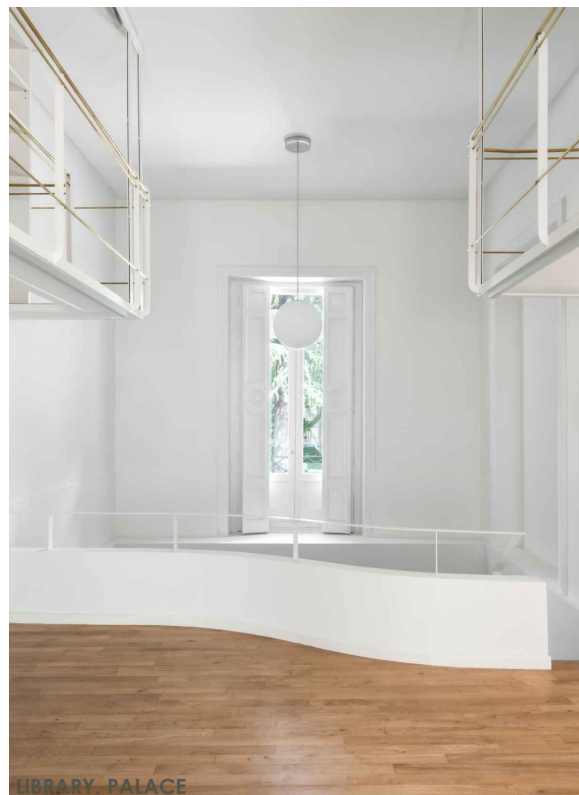
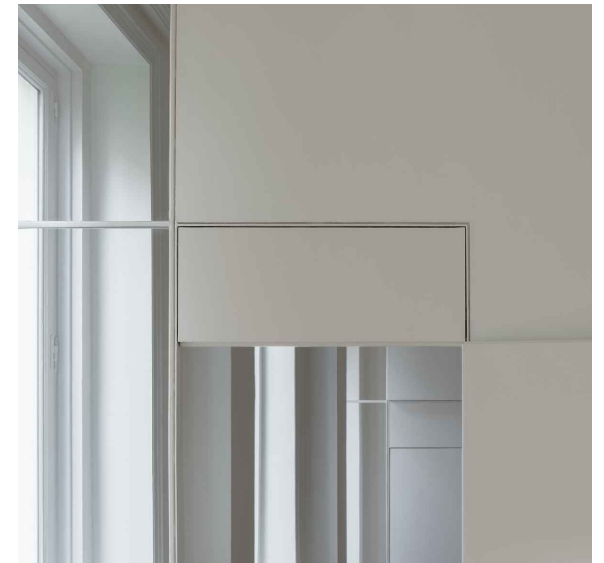
some freedom in order to generate new partitions without modifying the openings of the façade, which calls for creating half-window encounters designed with steel carpentry as glass and wood tympanum.

In order to respond to the documentary growth, the semi-basement is extended, generating a raised garden area, at the crown level of the original plinth.

The austerity of the original materials is maintained on the ones used during the rehabilitations: plastered facades with painted wood carpentry and the steel carpentry of the gazebo. Wooden floors and brick partitions finished in painted plaster.



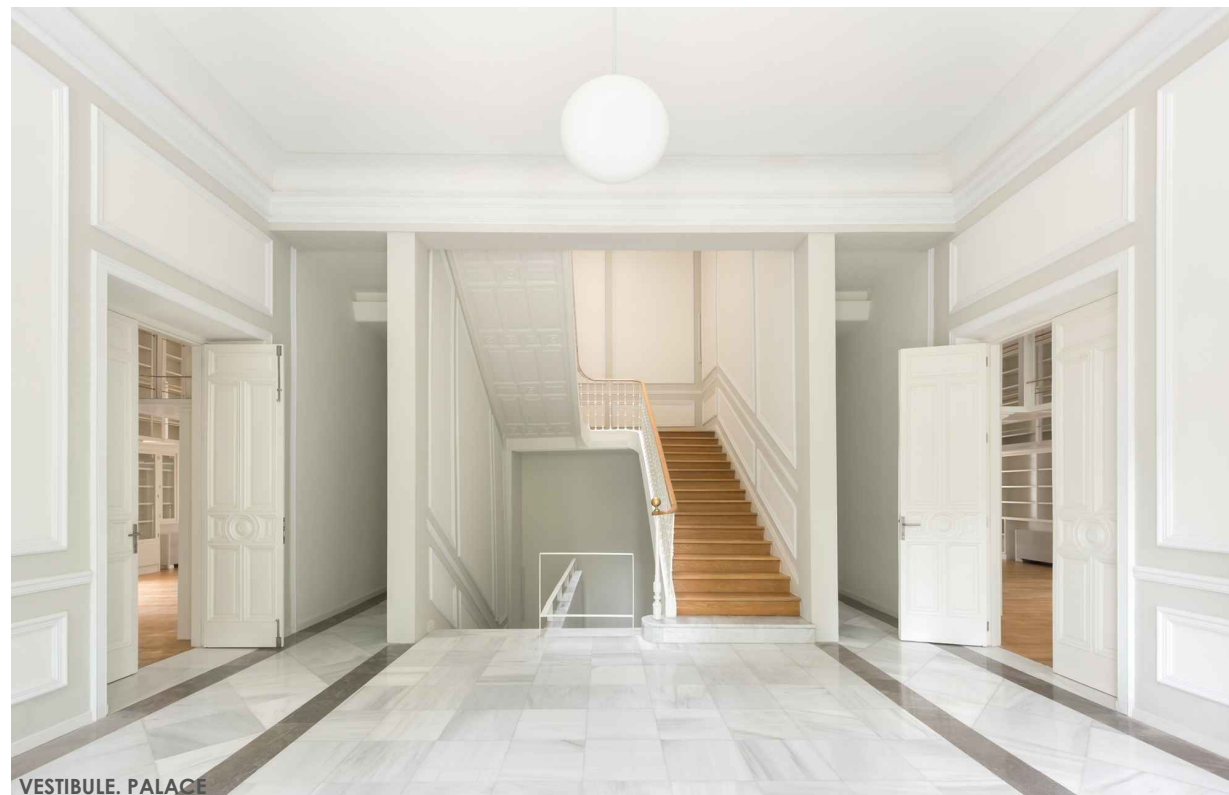
INTERIOR SOUTH ELEVATION. E/1:500



LIBRARY. PALACE



LIBRARY. PALACE



VESTIBULE. PALACE

